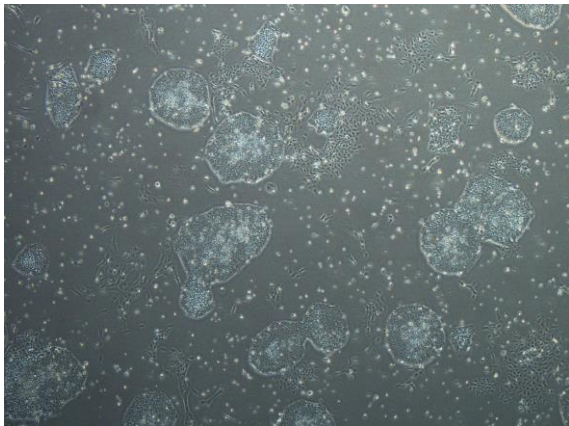
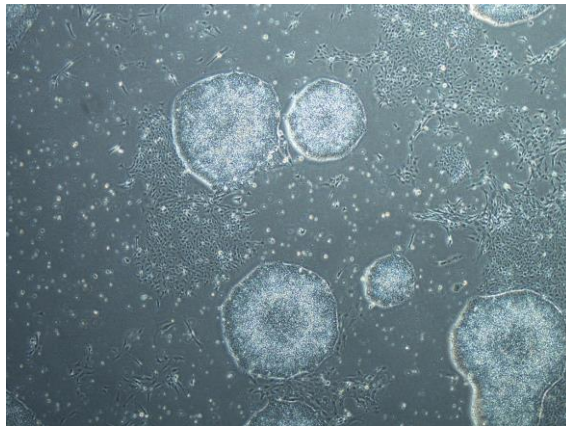


【 CiRA-j-1282 】 Morphology of iPSC colonies

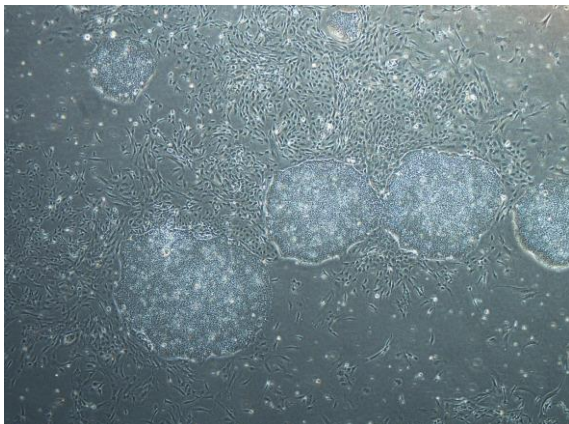
CiRA-j-1282-A: passage-3



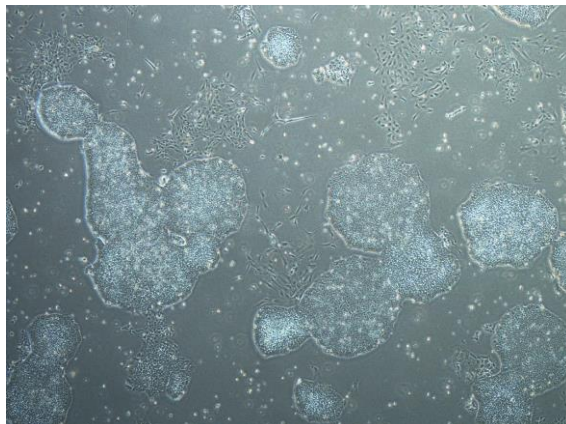
CiRA-j-1282-B: passage-3



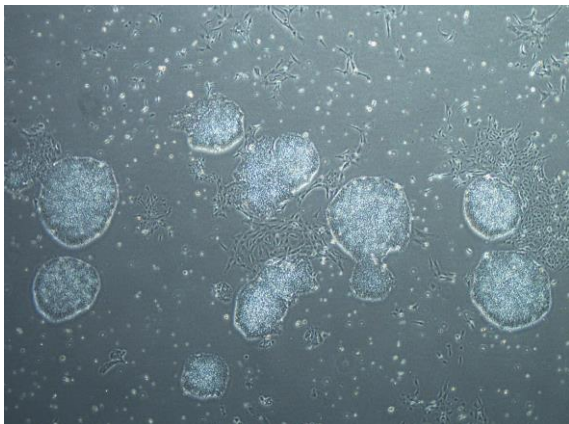
CiRA-j-1282-C: passage-3



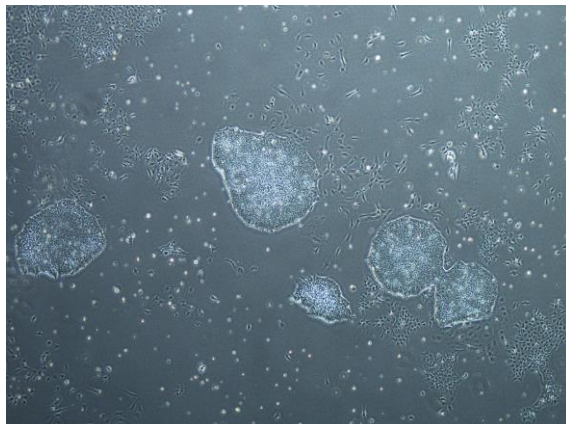
CiRA-j-1282-D: passage-3



CiRA-j-1282-E: passage-3



CiRA-j-1282-F: passage-3



(All images were captured at 4x magnification)